



**HAYS COUNTY
TRANSPORTATION PLAN**

Virtual Open House

JANUARY 7 - FEBRUARY 7, 2021





HAYS COUNTY TRANSPORTATION PLAN

- Identify and Implement Short and Long-Term Projects
- Preserve Right-of-Way
- Collaborate with Regional Partners to Guide Our Future Transportation Landscape



Projected Population and Employment Growth



Current and Projected Levels of Congestion



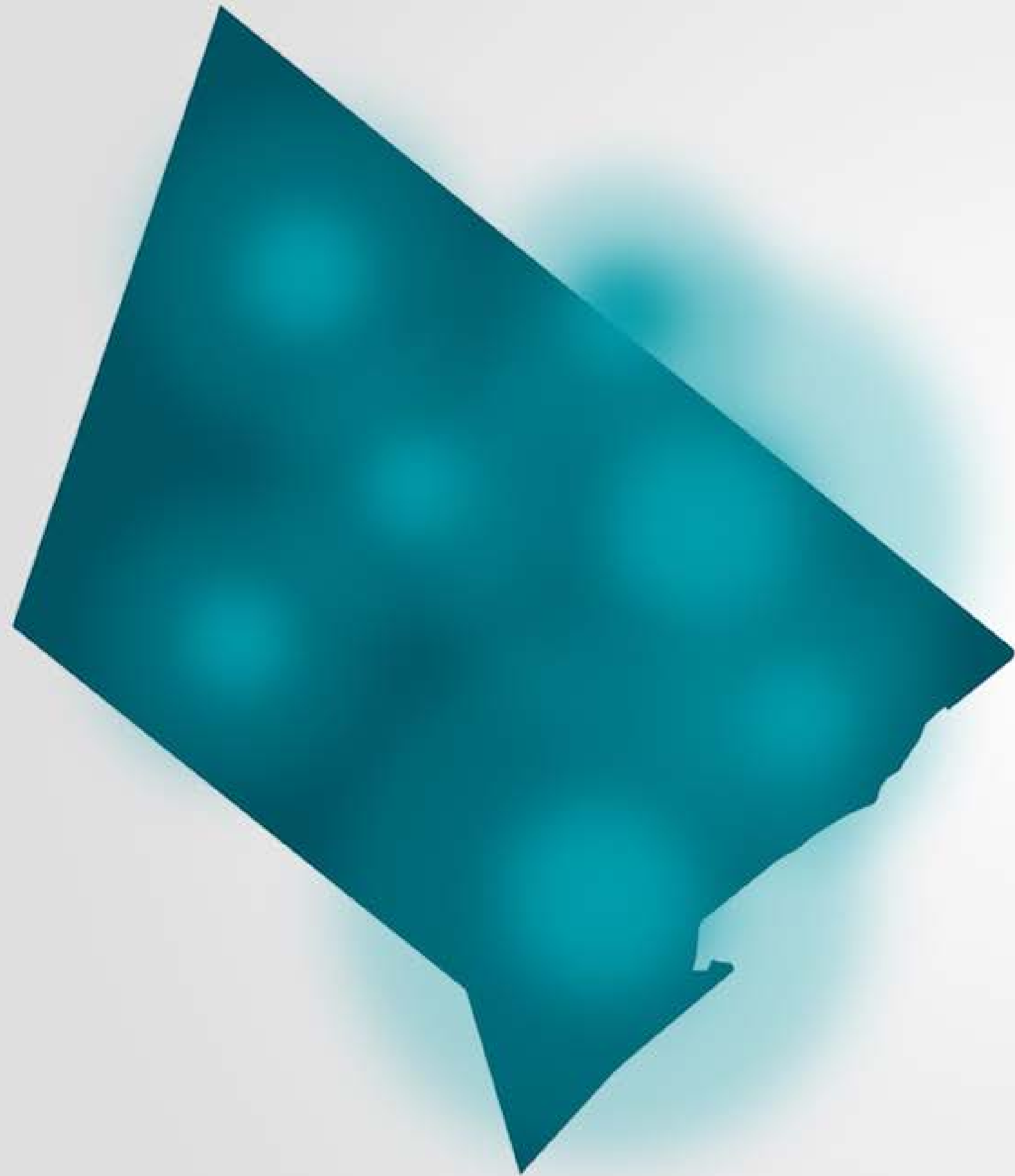
Needed Improvements and Connections that Increase Mobility



The Needs of Communities in the County



Community Input



**EMERGENCY
SERVICES**



**SCHOOL
DISTRICTS**



**CITIES AND
NEIGHBORING
COUNTIES**

WHAT WE HEARD: 200+ COMMENTS

ROADWAYS

Comment Topic	# Received
Windy Hill Road	21
RR 12	21
RM 967	16
US 290	15
FM 150	15
FM 1826	14
FM 1626	14
Darden Hill Road	13
Dacy Lane	7
Other Roadways East of IH-35	6

INTERSECTIONS

Comment Topic	# Received
White Wing & FM 2001 Overpass	19
Railroad Crossing at McCarty	14
FM 1826 & FM 150	10
US 290 & RR 12	9
FM 150 & Darden Hill Road	7

WHAT WE HEARD

**NEED FOR PUBLIC
TRANSIT**

31

**BIKING/WALKING
IMPROVEMENTS**

26

**ENVIRONMENTAL
CONSIDERATIONS**

9



WHAT IS IN THE PLAN



WHAT IS IN THE PLAN

TIMEFRAMES

SHORT-TERM

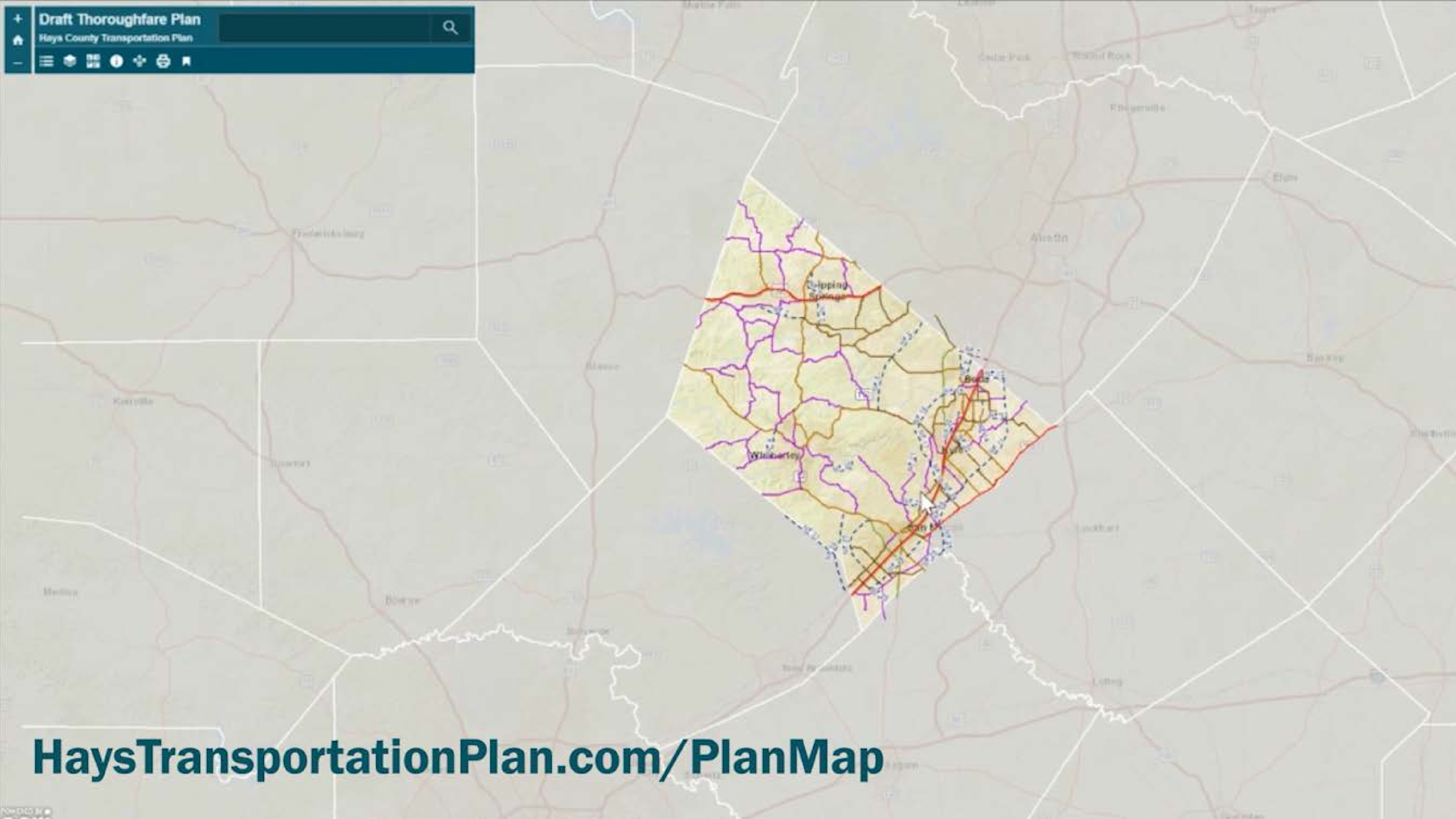
10 YEARS

MID-TERM

20 YEARS

LONG-TERM

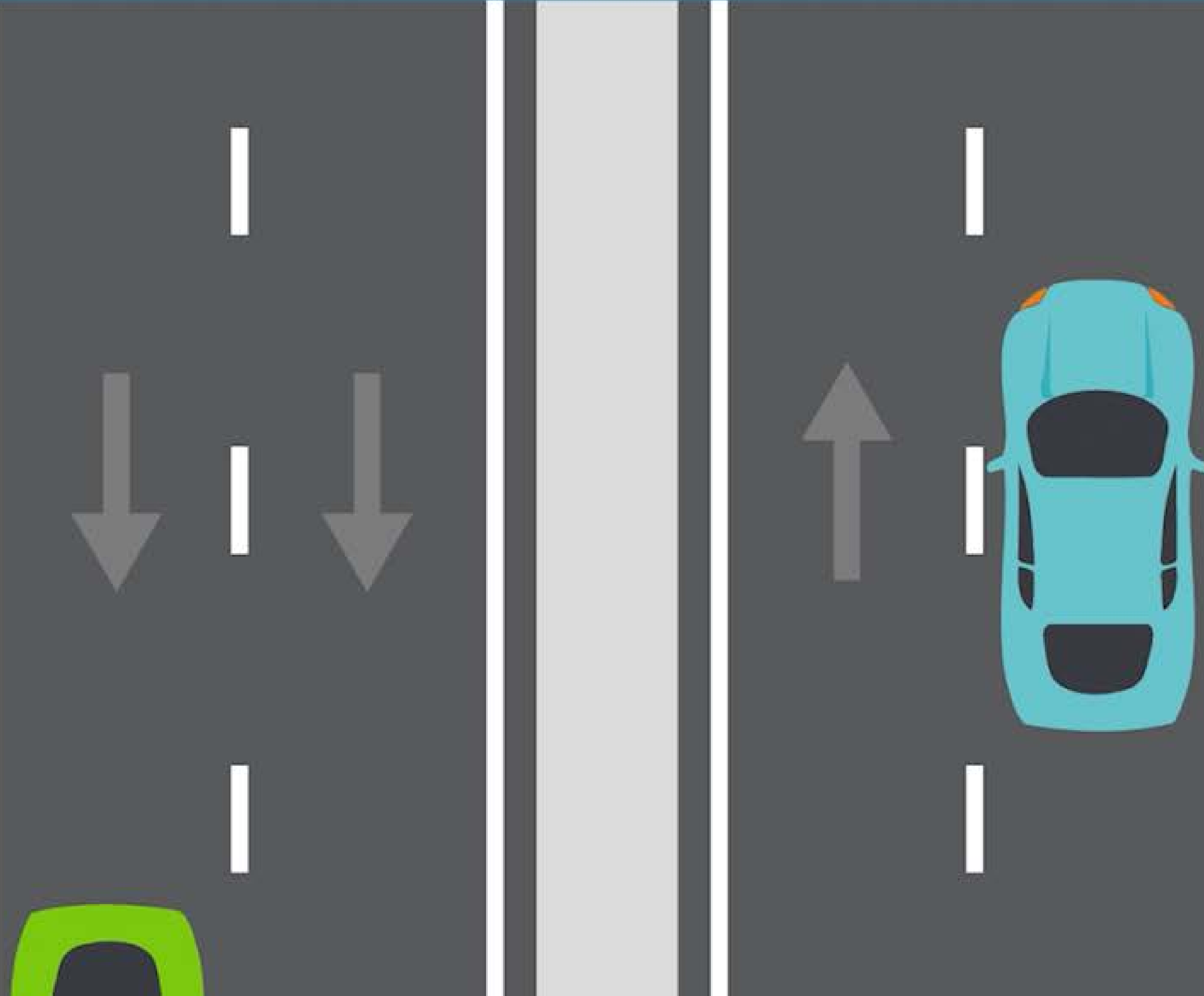
30 YEARS



HaysTransportationPlan.com/PlanMap

ROADWAY CONFIGURATIONS

MAD 4
Four-Lane
Major Roadway



Please Remember:

- Ultimate Improvements
- Additional Planning & Design
- Improvements Made Incrementally

NEXT STEPS

WE ARE HERE



**DATA ANALYSIS
& PUBLIC
ENGAGEMENT**

What do we need,
what do we want?

**DRAFTING
THE PLAN**

Using technical
analysis and
public input

**PUBLIC
ENGAGEMENT**

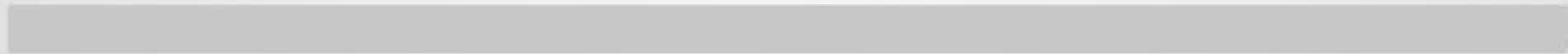
Present Draft for
public feedback

**REVISE AND
FINALIZE**

Present to
Commissioners
Court

**SUMMER
2020**

**SPRING
2021**



SHARE YOUR INPUT

TAKE THE SURVEY

Comment period open through
February 7, 2021

Hays County Transportation Plan - Survey 2

Does the draft Plan address needed improvements and connections in the County?

Select an answer between 1 and 5, with 1 being "strongly disagree" and 5 being "strongly agree".

1 2 3 4 5

Does the draft Plan address areas of current and future growth and development in the County?

Select an answer between 1 and 5, with 1 being "strongly disagree" and 5 being "strongly agree".

1 2 3 4 5

Does the draft Plan address your transportation and mobility needs?

Select an answer between 1 and 5, with 1 being "strongly disagree" and 5 being "strongly agree".

1 2 3 4 5

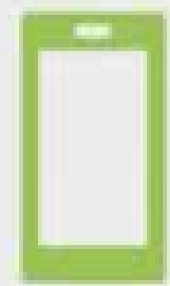


Comments may also be shared by email, voicemail, text or mail

Comment period open through
February 7, 2021



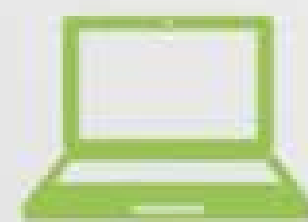
info@haystransportationplan.com



512-400-4297



Attn: Hays Transportation Plan
PO Box 5459
Austin, TX 78763



HaysTransportationPlan.com

